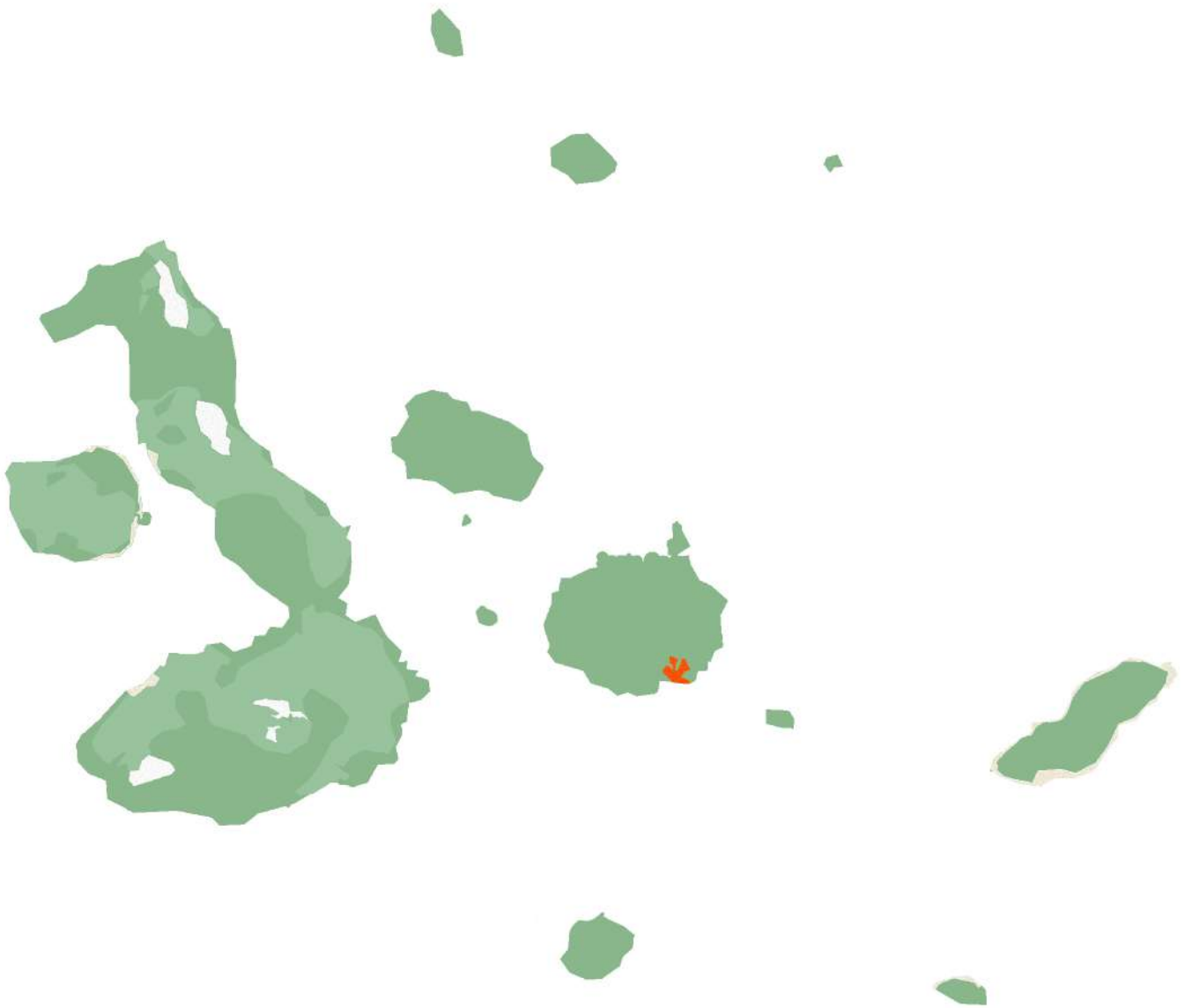




Parque Nacional
GALÁPAGOS
Ecuador



GALAPAGOS RETREAT

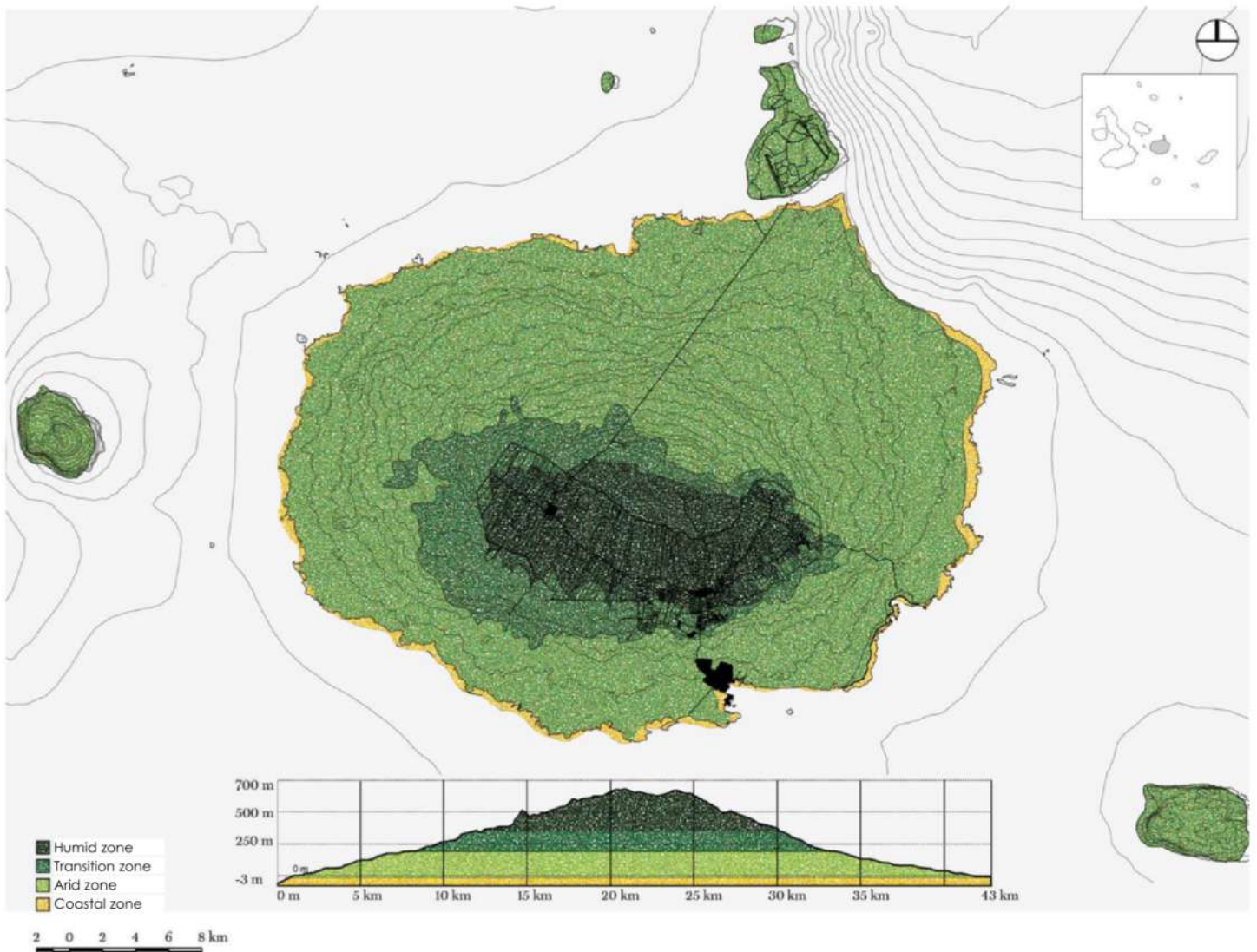


Eco-Design in The Galapagos Islands

The Galapagos Islands, a UNESCO World Heritage Site, are known for their fragile ecosystems, endemic species, and their role in Charles Darwin's theory of evolution. However, increasing tourism and urban expansion threaten this delicate balance. As visitor numbers rise and infrastructure demands grow, the islands face significant challenges in preserving their unique biodiversity while accommodating the needs of both locals and tourists. Unregulated construction, resource depletion, and habitat disruption have intensified concerns over sustainable development in this ecologically sensitive region.

This architectural project seeks to redefine sustainable hospitality by proposing an eco-designed hotel that harmonizes with the unique natural environment of the Galapagos Islands. By integrating green building practices, responsible tourism strategies, and innovative architectural solutions, this project aims to serve as a model for future developments in environmentally protected areas.

SANTA CRUZ ISLAND - PUERTO AYORA



Puerto Ayora: The Heart of the Galapagos

The largest town in the Galapagos Islands, serves as the primary hub for tourism, commerce, and scientific research. Located on Santa Cruz Island, it is home to approximately 12,000 residents and acts as the main gateway for visitors exploring the archipelago. The town features a blend of local businesses, hotels, restaurants, and conservation organizations, including the world-renowned Charles Darwin Research Station.

Despite its economic importance, Puerto Ayora faces critical urban challenges, including overdevelopment, resource scarcity, and environmental strain due to rapid tourism growth. The increasing demand for infrastructure has led to unfinished buildings, inefficient land use, and a lack of cohesive urban planning, disrupting the fragile balance between human habitation and nature. This project seeks to address these issues by promoting sustainable urban expansion that aligns with the ecological and cultural integrity of the region.



Tourism

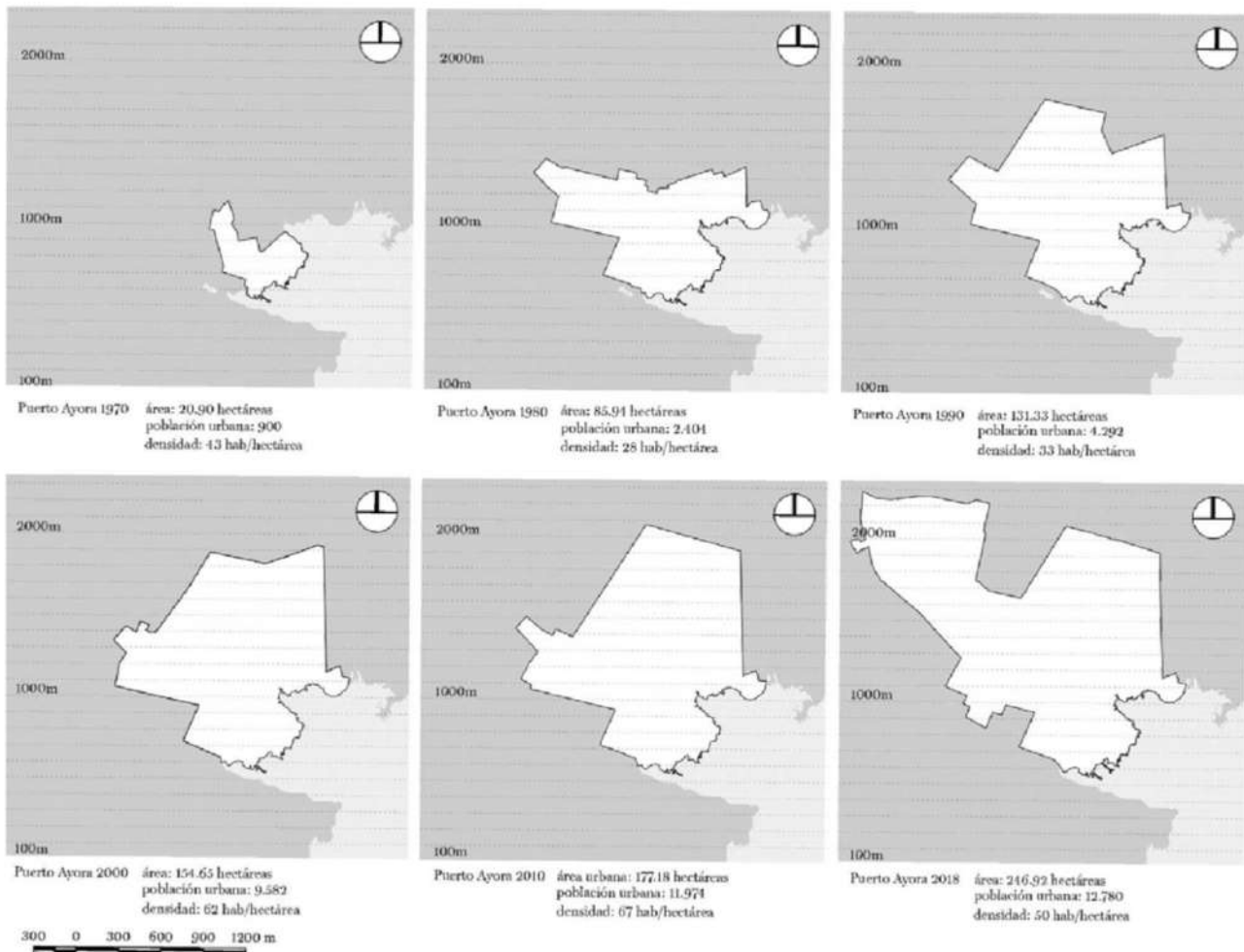
Tourism has become a crucial economic pillar for the region, providing jobs and boosting local businesses, especially in Puerto Ayora, the largest town on Santa Cruz Island. The influx of visitors supports local livelihoods through hotels, guided tours, restaurants, and other services. The Galapagos represents a critical opportunity for eco-conscious tourism to thrive and show the world that human exploration and environmental stewardship can coexist.



Key Issues

The main issue is the unsustainable urban expansion and tourism development in the Galapagos Islands, particularly in Puerto Ayora, where rapid tourism growth has led to unfinished and inefficiently planned buildings, putting strain on the fragile ecosystem. The demand for infrastructure has resulted in environmental degradation, overuse of natural resources, and disruption of native wildlife habitats. Additionally, existing tourism structures lack sustainable design strategies, failing to integrate energy efficiency, material reuse, and eco-friendly construction techniques.

URBAN DEVELOPMENT

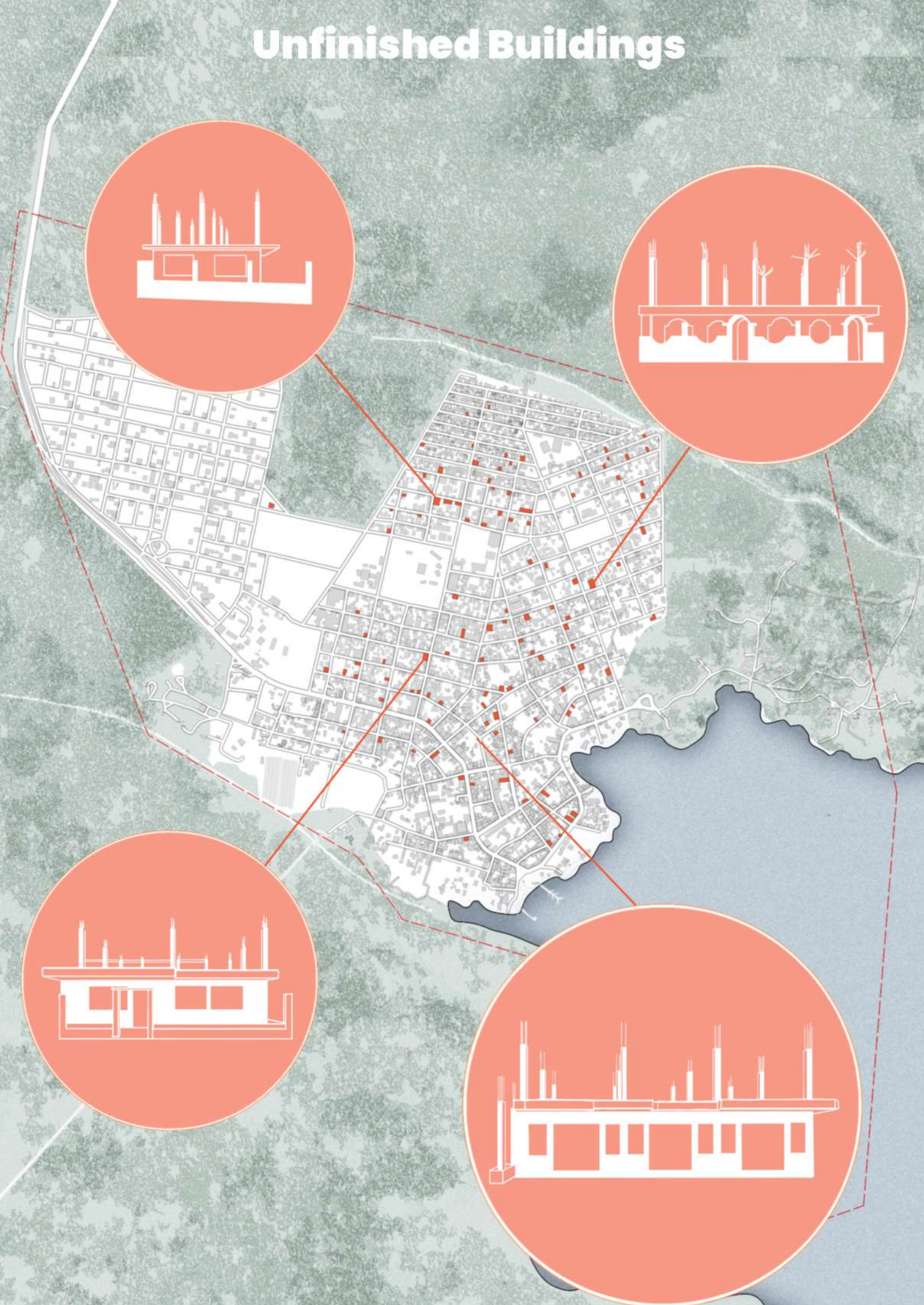
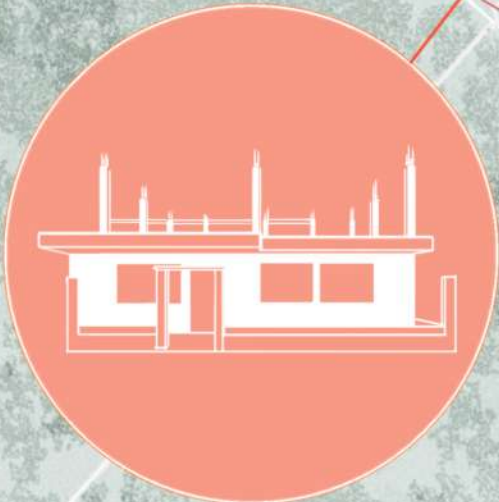
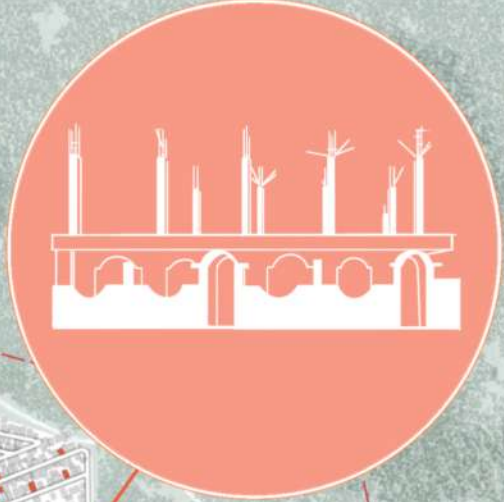
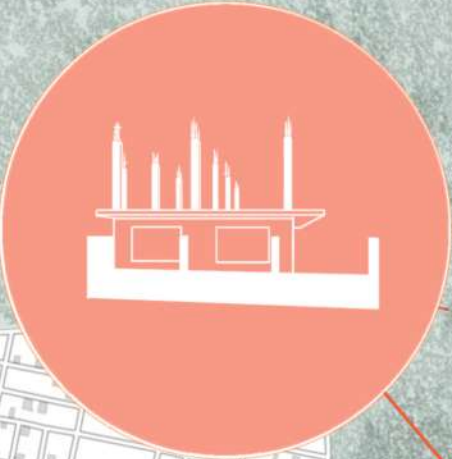


Why Does Urban Footprint Matter?

In a fragile ecosystem like the Galapagos Islands, the urban footprint is especially important because unchecked expansion can lead to deforestation, habitat destruction, water shortages, and pollution, threatening endemic species and biodiversity. Managing the urban footprint helps ensure efficient land use, reduced environmental degradation, and better integration of green infrastructure. By reusing existing structures, limiting unnecessary sprawl, and incorporating sustainable building practices, urban areas can grow responsibly while minimizing their ecological impact.

In the case of Puerto Ayora, controlling the urban footprint is essential to preserve the natural beauty of the Galapagos, maintain a healthy balance between development and conservation, and support long-term sustainability for both residents and visitors.

Unfinished Buildings





Unfinished Buildings

Puerto Ayora's many unfinished buildings, often abandoned due to financial or logistical issues, disrupt the urban landscape. However, these structures offer a valuable opportunity for sustainable development.

By adaptively reusing them with lightweight, eco-friendly materials and energy-efficient systems, they can be transformed into functional spaces for tourism and community use.

This approach reduces waste, supports the circular economy, and sets a model for responsible growth in fragile ecosystems.

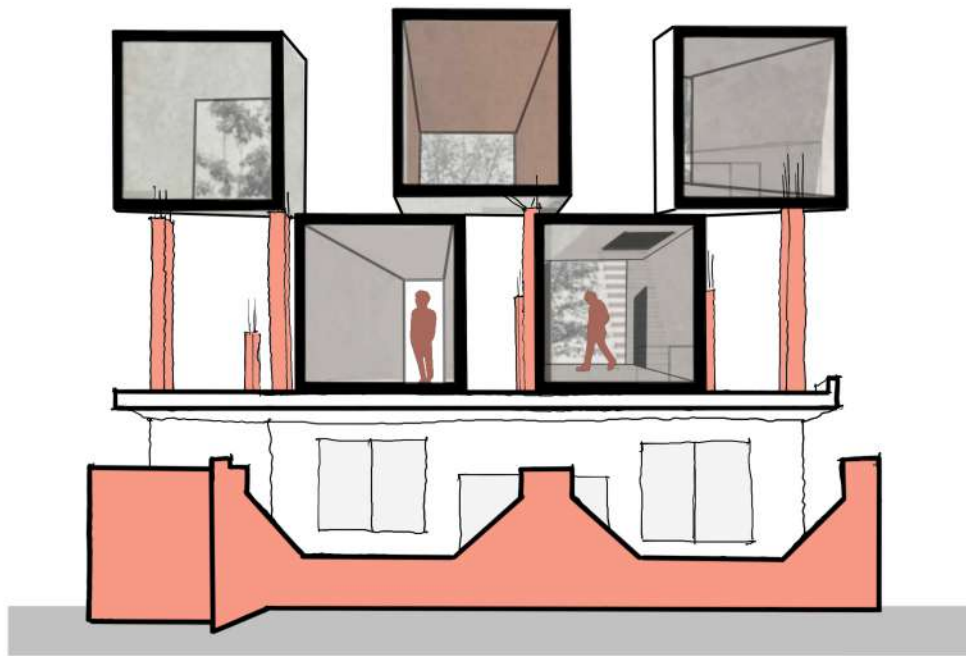


SITE

Coordinates

0°44'35.6"S 90°18'53.2"W

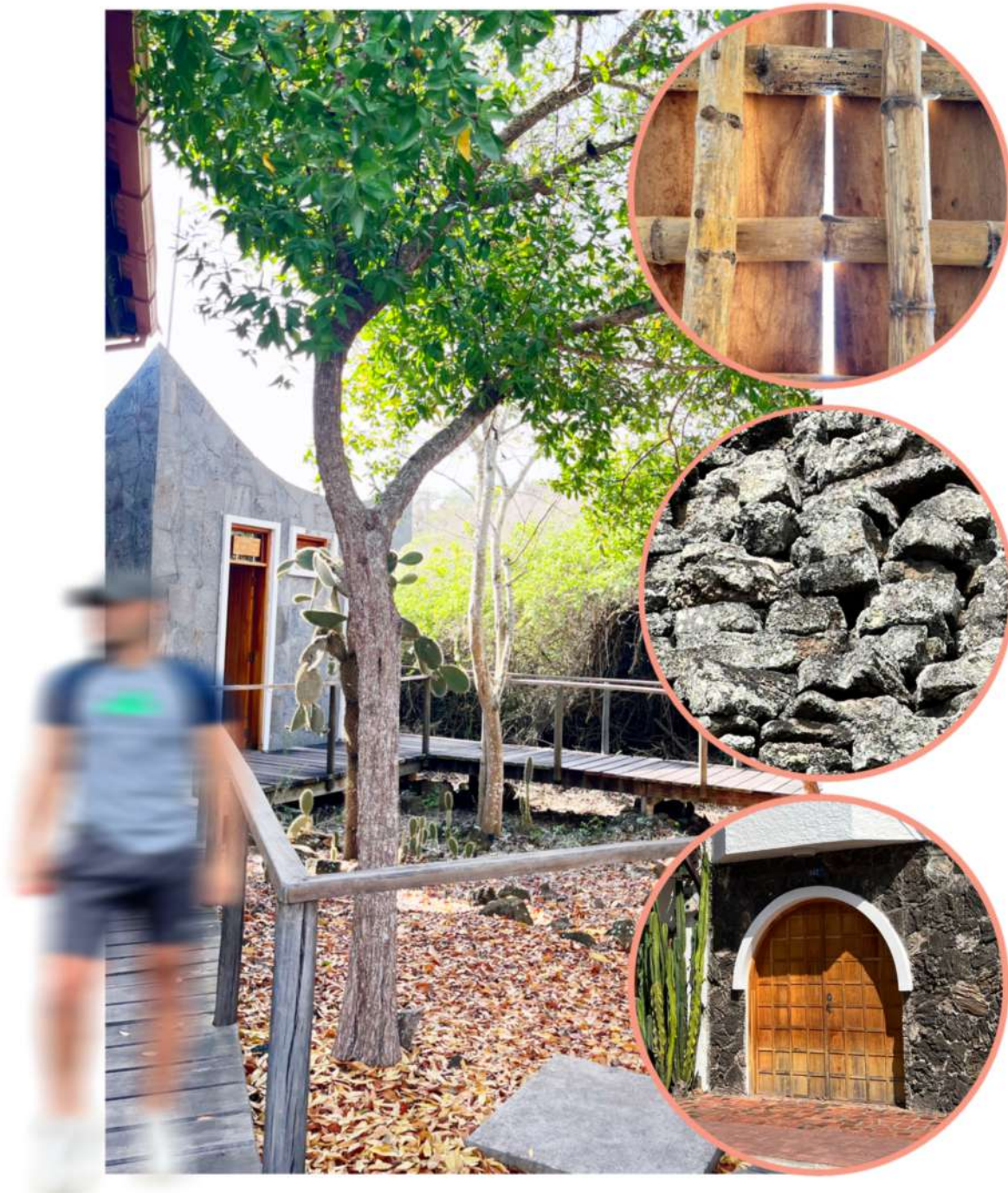




Eco Design - Hotel

Key Words

- Materials
- Addition
- Reuse
- Detail
- Adaptability
- Identity

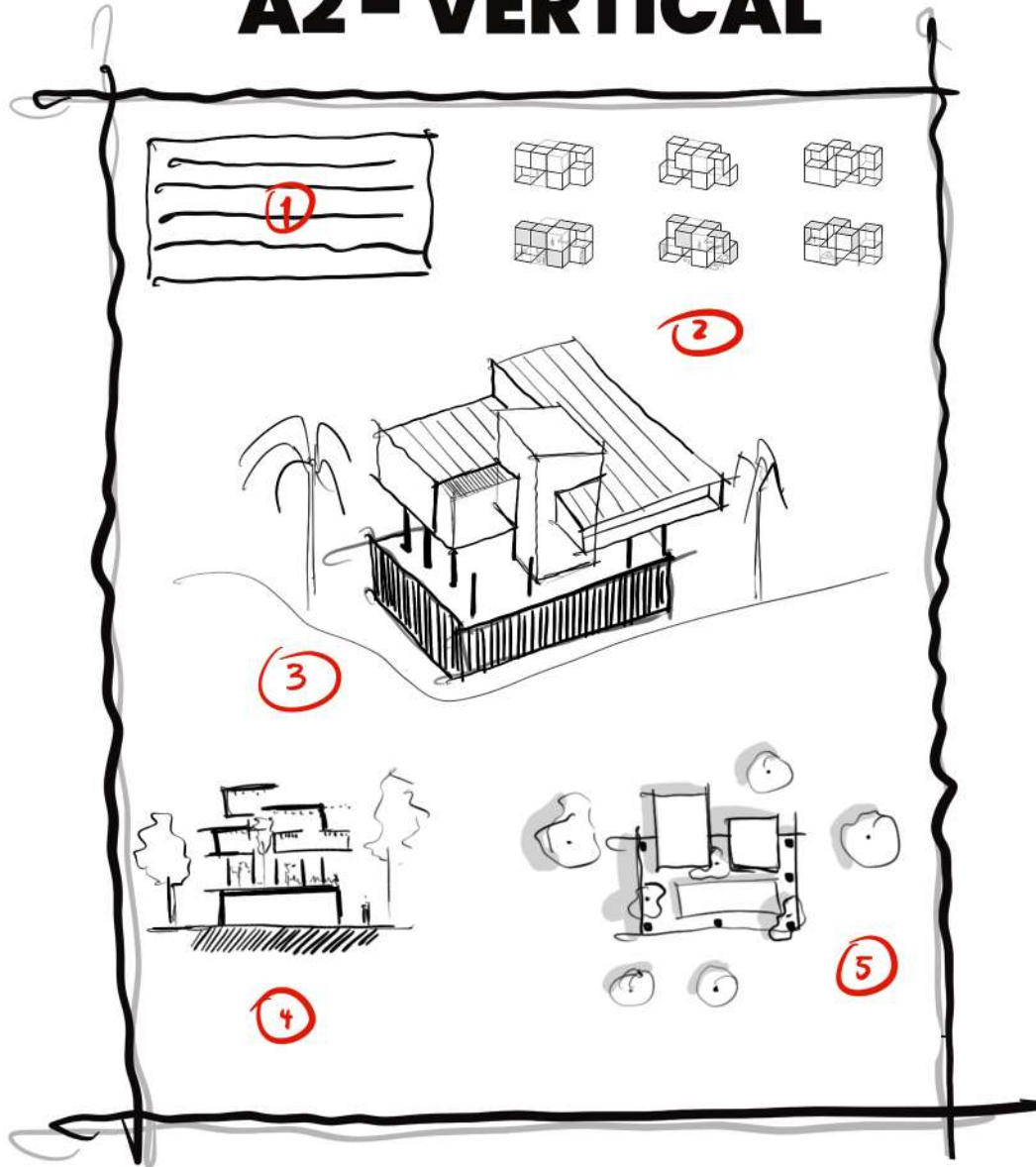


Project Requirements

To develop a sustainable eco-hotel in the Galapagos, the design must balance conservation, innovation, and community engagement. In Puerto Ayora's fragile ecosystem, it should prioritize adaptive reuse, low-impact methods, and alignment with local ecological and cultural values.

1. Sustainability & Environment – Repurpose unfinished buildings using local materials (volcanic rock, bamboo) and passive design (natural ventilation, solar shading). Integrate renewable energy (solar panels, rainwater harvesting) and sustainable waste systems (composting, greywater recycling).
2. Architecture & Structure – Ensure modular, flexible designs for future expansion with lightweight construction and climate-responsive facades, blending with the Galapagos landscape.
3. Tourism & Community – Promote eco-tourism, local involvement, and shared public spaces, while encouraging sustainable mobility (bike paths, electric transport).

A2 - VERTICAL



It's **IMPORTANT** to note that the template provided is purely for **EXAMPLE** purposes. While it serves as a helpful guide, feel free to adapt and customize it to better suit your specific needs.

SUBMISSION REQUIERMENTS

1. CONCEPT
2. CONCEPTUAL DIAGRAMS
3. PERSPECTIVE/RENDER
4. SECTION
5. SITE PLAN /
GROUND FLOOR



1st prize
1500 €

2st prize
800 €

Editor Choice Prize
400 €

3 x Honorable Mentions
100 €

TIMELINE & PRIZES

APR 01



Start
Registration

MAY 27



End
Registration

MAY 31



Submission
Deadline

JULY 15



Results
Announcement